



NORDIC KNOTS



Climbing Vine

Designed by Campbell-Rey with a colourful and art deco-influenced sensibility and the floral motifs of Gustavian style, the neoclassicism of the North. Gustavian style, a Swedish take on French neoclassicism dating back to the 1780s, with motifs like the wreath and the folding ribbon, along with ideas taken from the history of garden design.

Climbing Vine is a similarly contemporary update to a classic motif, a line of scrolling chartreuse foliage, sharp and graphic in its outline, that winds around the edge of a calm lilac rug.

Size:

5'x8'

6'x9'

8'x10'

9'x12'

Retail Price:

\$ 945

\$ 1295

\$ 1895

\$ 2495



NORDIC KNOTS

Hand knotted plush design. 12 mm thickness.

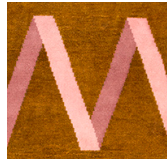
100% New Zealand wool, for softness and durability.

Designed in Stockholm, handmade in Bhadohi, India.

Color Variations:



Climbing Vine



Folding Ribbon



Garden Maze

GoodWeave Certified™

